

Wybong Action Group Incorporated

Internet: www.wag.org.au
Email: actionwybong@bluemaxx.com.au
Phone: 02 65478090 (ah)
Mail: Wybong Action Group
C/ 740 Ridglands Road
Manobalai NSW 2333

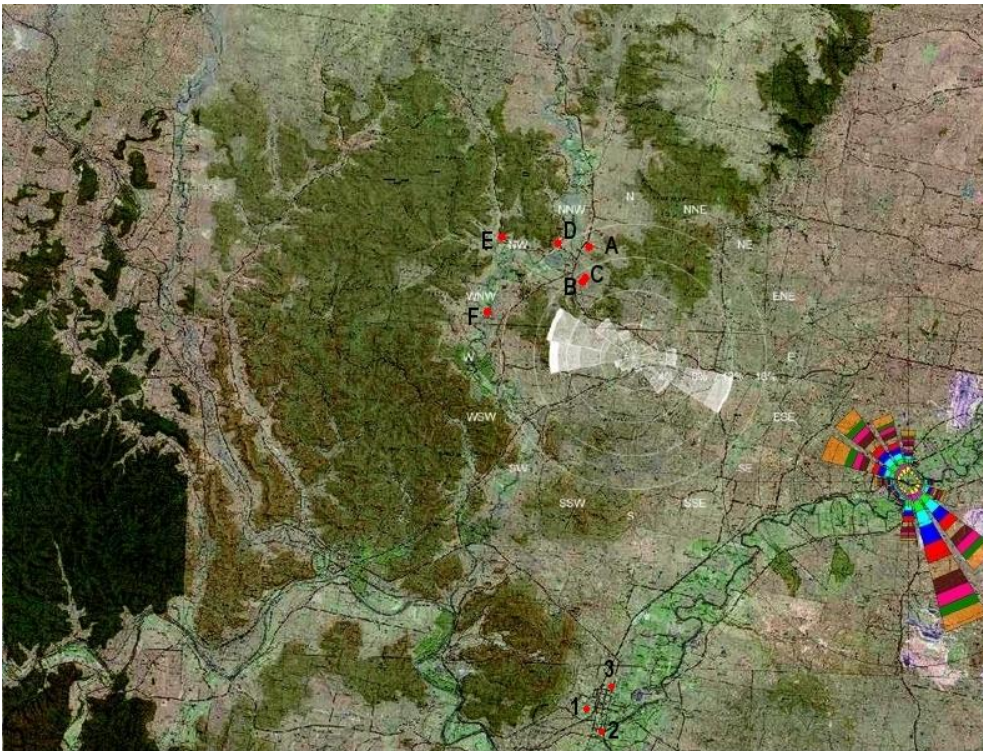


25 November 2009

Mitchell Bennett
Head Regional Operations Unit
Hunter Region
Environment Protection & Regulation
Department of Environment & Climate Change NSW
117 Bull Street
PO Box 488G
Newcastle NSW 2302

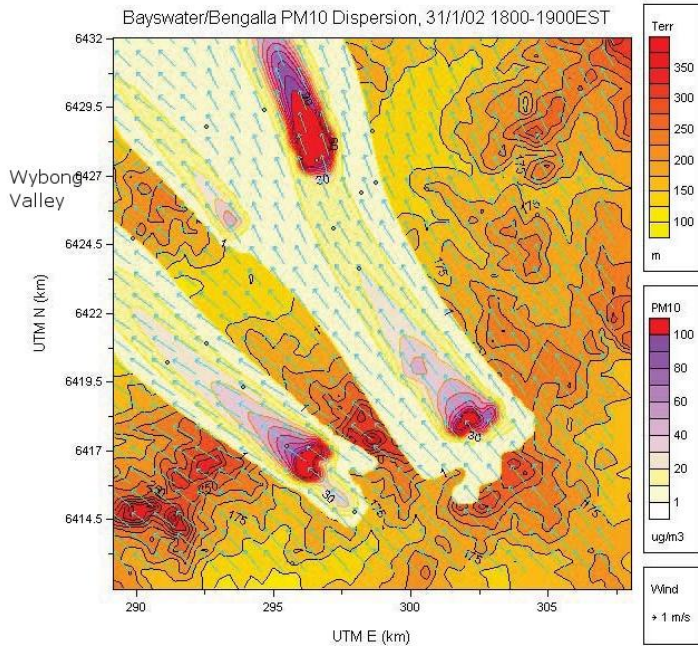
Dear Mr Bennett,

We are pleased to provide the following coordinates regarding potential locations for PM10 & PM2.5 & PM2.5 real time dust monitors in the population receiver areas of the Wybong Valley and Denman township as requested by yourself and Mr Holmes following our discussion at the Upper Hunter Air Quality Public Consultation held at Singleton on 17th November 2009.



In arriving at the potential locations we analysed the wind roses relating to Bayswater PS, Bengalla Mine, Mt Arthur Mine, HVO, Jerrys Plains, Mangoola MLA and Macleans Hill over years 2002-2004 (and longer periods where available) to reproduce the representative wind roses displayed to the left.

On the basis of these wind patterns, dust and plume dispersal and evidence of observation exceeding 20 years in the Wybong Valley the potential locations are suggested to further satisfy the Air Quality System requirement for effective population receiver coverage of dust dispersion monitoring on the predominant SE winds.



The Wybong Valley Community (population > 500) request that DECCW give favourable consideration to locating a PM10 & PM2.5 monitor in the Wybong Valley due to the dust and power station plume dispersal that is directed by the predominant winds and landforms into the Wybong Valley area.

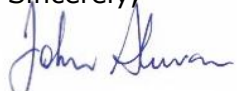
We believe that an absence of real time monitoring in the Wybong Valley area would present a serious deficiency in the DECCW Upper Hunter Air Quality Monitoring program that would be detrimental to the substantial population resident in the Wybong Valley.

The potential locations identified on the previous page and in the table below are:

- Proximate to power supply ~ 500m
- Proximate to telephone cable ~ 500m
- Proximate to vehicle access ~ 800m
- Clearance from Mid & Upper Canopy Trees ~ 200m radius
- Elevation 160 - 200m ASL
- Provide secure, potential long-term, Tenure

Community Preferred Real Time Air Quality Monitoring PM10 & PM2.5 Location Options in the Wybong Valley				
Marker	Location	Owner/Tenure	Latitude	Longitude
A	Adjacent to Manobalai Telephone Exchange	Telstra Corp Ltd	-32.223590°	150.660401°
B	740 Ridgeland Road at Power Distribution Pole	N. Litchfield & LGA Shewan	-32.230308°	150.673472°
C	740 Ridgeland Road 100m beyond Power Distribution Pole		-32.229695°	150.674299°
D	Manobalai NR Eastern Crown Lands, Road Reserve near Brays (Powers) Road	Muswellbrook Shire Council	-32.222830°	150.671971°
E	Manobalai NR Eastern Crown Lands road reserve near Dry Creek Road		-32.220114°	150.636453°
F	"Gilburn" Property nr Wybong Ck	Not Personally Known	-32.247090°	150.630122°

Real Time Air Quality Monitoring Location PM10 & PM2.5 Options in Denman				
1	Denman Golf Course	Muswellbrook Shire Council	-32.391730°	150.678227°
2	Sewage Treatment Works		-32.399972°	150.687378°
3	Adjacent to Electricity Substation	Energy Aust Ltd	-32.384345°	150.687482°

Sincerely,

 John Shewan
 President,
 Wybong Action Group